

Quick Start Guide

This manual describes how to use this wifi camera and install the supplied software. Be sure that you have read and understood its contents before using the camera.

To get started, you need:

1. A wireless router, its network name, and password if necessary. (NOTE: Router accepts only 2.4 Ghz. Use numbers and letters in creating network name and password.)
2. A smart device, such as an Android Smart Phone or Tablet (Android version 4.0 or latest) or an iPhone, iPad, or iPod Touch (iOS version 6.1 or later).

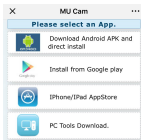
APP DOWNLOAD



MUCAM



Picture 1



Picture 2

APP Link: http://112.124.40.254:808/app_dwn/MuCam.html

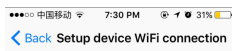
1. Scan the QR (picture 1) code directly to the download interface (picture 2).
2. Select and download software according to your mobile phone system.*You can also download the App "Mu Cam" from Google Play Store (for Android) or Apple Store (for iOS). Or open the link to download the APP.

Operation:

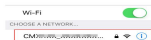
Note : Before setting , please confirm that the camera is powered on .

AP Mode Connection (Point to Point)

1. To connect to your smartphone's hotspot connection, search for your phone's WIFI signal and tap to connect network with the camera UID (which is unique to each unit), as shown in the image below:



Step 1. Power on the camera, then go to "Settings" on your device. Tap on "Wi-Fi", then connect the network same as camera UID, as below.



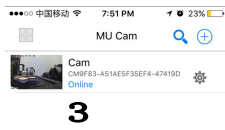
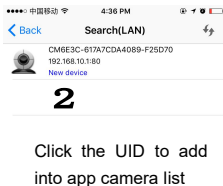
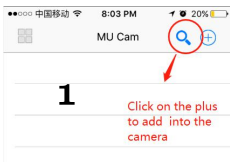
If you can not find the WiFi network same as camera UID, Please reset the camera and wait until the camera restarts, and then search for Wifi signal



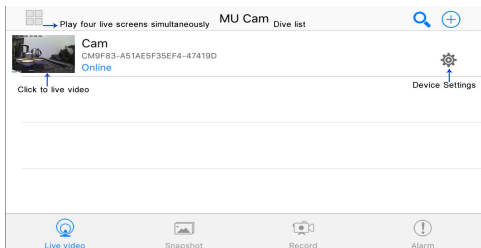
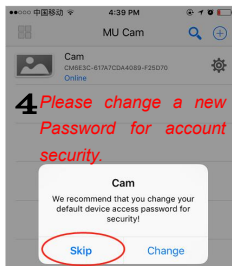
Note: 1. Please wait about 1 minute after powering on the camera

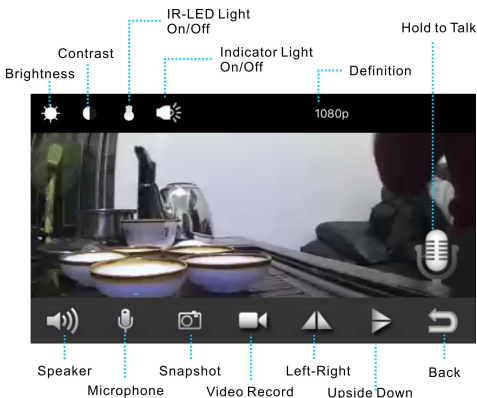
2. Please note that when connecting to your phone's hotspot, camera can't be controlled remotely when phone's WIFI signal is out of camera range. If there is no hotspot Wifi, please reset the camera.

2. Then Open the phone App (Mu Cam). This signal is the machine UID which is different for each machine. Click on the icon "Q" to add into the camera as shown below:



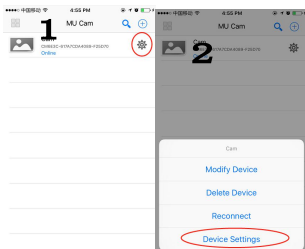
Click the UID to view the image .



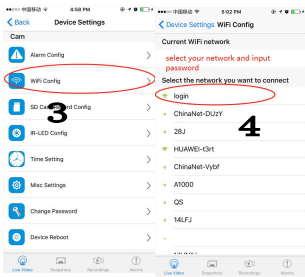


Note: Some model without Speaker, Microphone, or IR LED

Remote IP Mode Connection

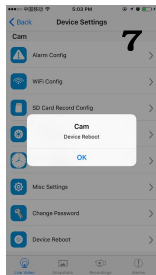
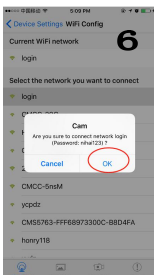
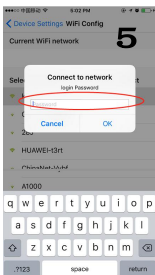


1. Click on the small gear icon
2. Enter advanced configuration as shown in image.



3. Find the installation location of the signal router, configure the camera to enter the password into the router as shown in the image.

NOTE: If you have 2.4 and 5.0Ghz dual Wi-Fi on your router, please select 2.4Ghz. Network name and password accept numbers and letter only.



Computer Software Download

1. Open Link:

http://112.124.40.254:808/app_down/MuCam.html

2. Download and install the software “IP Camera Search Tool (only works in same area network)

3. “ IPCMultiView ” (for remote control)

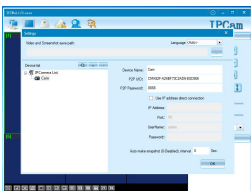



Adding Camera to IPC Multi View

Camera must be connected to a network first (Remote IP Mode). Run IPC MultiView Setup EN on your Computer. The Username is “admin” and NO password is required.

1. Click “Camera Setup” or 


2. To add camera to PC, Click “+”, input the camera name, camera’s UID (located at the bottom of camera), and password (Default password is 8888), then click “OK” .

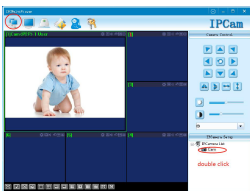


2.1. If the camera and PC is in LAN, just click  to search the camera’s UID, then click the camera’s UID and “OK” .

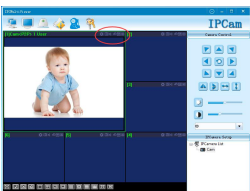
2.2. Click “-” to delete camera from the device list.

3. Double click the “camera name” at the bottom right corner or


 connect the camera.



4. After connecting, click these icons to use the camera functions. Click “Settings” icon to finish settings.

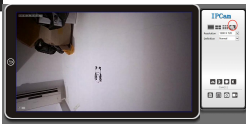
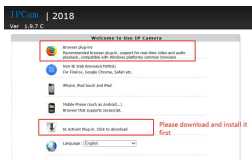
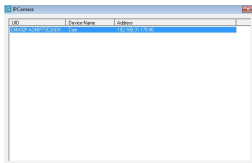



Adding Camera to IP Camera Search Tool

1. View in Web Browser
2. Camera must be connected to network first. (**Remote IP Mode**).
3. Make sure the Computer and camera are connected to the same WiFi network.
4. Run IP Camera Search Tool on your computer.
5. Click “IP Camera Search Tool” icon. 
6. You can see the camera item list in the camera list. You can visit camera only in the local area network (LAN) on Computer.
7. Double click “IP address”, the Username is “admin” and no password is required. If your PC does not

install the player plug-ins, please click to download and install.

8. After installing the player plug-ins, click “Browser plug-ins” you can view the camera real-time video on your computer via Website.



You can also click the settings icon to  see more information.

FREQUENTLY ASKED QUESTIONS

What Micro SD Card is required for recording? Why can't I use my Micro SD Card for recording? The camera supports up to 128 GB Micro SD card. Please use High Speed Class 10 FAT formatted memory card. You must format the Micro

SD before using. If SD card is not recognized when inserted into camera, just remove and re-insert.

Why does my computer or security software say the software is dangerous and it is a virus? Just ignore the warning and continue.

Why can't the camera go online? 1. Powerless, please charge the battery or connect the camera while charging.

2. Check if your router is working properly or not.

3. Check your signal, your device may not be connected to Wi-Fi due to weak Wi-Fi signal.

4. Please check your network name and password to see if it includes special symbols. (the Indicator light flashing abnormal when the password wrong)

5. Check if your Wi-Fi setting is correct or not, correct password may be needed.

How can I record videos in the Micro SD card? Insert a memory card in the camera and open the setting menu to set SD card video recording.

Why is remote monitoring not smooth? You should choose a suitable resolution to watch according to your internet speed.

Why I can't save to my SD card? SD Card must be formatted if this is your first time to use it.

How do I change my password? Press reset key for 10 seconds and restore the factory setting.