

---

# CarKeyCam Recorder

## User Manual



**4K Full HD**

3200\*1800

Model : WD-4KS

---

First of all thank you for purchasing this product. The use of this product, please strictly comply with the relevant laws and regulations, not to use this product for any illegal purposes, otherwise the consequences. In order to use this product correctly and easily, please read the instructions in detail before use

## Car Key Cam Features

- SONY IMX179 SONY HD IENS Super image sensor for low illumination video recording, quick light response
- 4K Full HD 3200\*1800, 2K-1296P, 720P-1280\*720, VGA and other resolutions can be set
- H.264 compression
- Support TF card, max support 128GB.
- In the process of automatic video 180 degree flip screen correction
- High capacity 800MA precision battery can be used for continuous HD video recording for 1 hours
- Support edge charging and recording, cyclic video recording
- WIFI short-range APP support real-time viewing, the longest distance of up to 50 meters
- USB 2.0 plug and play, boot shutdown can be easily connected with the PC/MAC
- Provide development software for parameter free

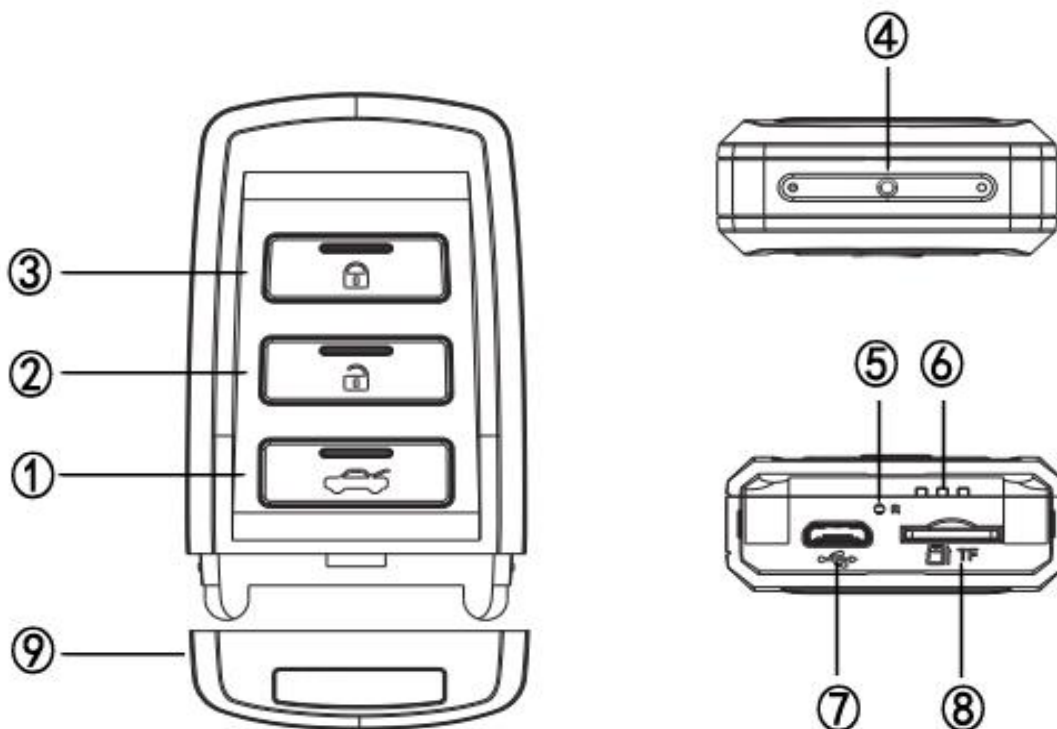
configuration modification

- The car key design, convenient for use in meetings, interviews, forensics, outdoor activities and other occasions

## Car Key Cam Layout

Products in accordance with the object, the picture is for use only, reference

① : Boot key ② : Mode key ③ : Confirm key ④ : Lens ⑤ : Reset ⑥ : Indicator light ⑦ : USB ⑧ : TF Card slot ⑨:Back cover



## Main Operations

---

## 1. Powering the Car key Cam On/Off

Long press the button button for about 2 seconds, until the blue light is released, the machine carries on the video standby state, complete the boot. (no operation, 1 minutes automatic shutdown in standby mode) (standby time can be configured by software)

In standby mode, press the button button for about 2 seconds, release the button and turn off the light when the indicator is turned off.

## 2. Recording Video

Click the confirmation button, the blue light slow down, you can start the video,

If you want to pause the video, please click the confirmation button again. At this point, the blue light lights up and goes into the video standby mode,

A video file is automatically saved every 1, 2, 3, 5, 10 minutes for a long continuous video recording. (the length of time can be configured by software).

## 3. Taking Photo

**Enter the camera mode:** in the standby state (blue light Chang Liang), press the mode button button 1, the indicator light from blue light to red light, that has entered the camera mode.

**Photo:** click the confirmation button button, red light flash 1 times, complete a photo.

**Exit camera mode:** click the confirmation button button again 1, return to the video standby (blue light Chang

---

Liang).

#### **4.WIFI mode**

In standby mode, long press the mode key, red, yellow or blue yellow lights long bright, indicating WIFI function open, at this time can through the APP software for WIFI short distance real-time watching video picture.

Open The cd driver, find the app file and install to you mobile phone.

Connecting DMC\_PXP WIFI hotspots through mobile

phones . password :1234567890

Open the APP software and click on it

Enter real time preview interface

#### **5.Auto Power Off**

In the following cases, the machine will automatically shut down:

(1) when the built-in lithium electricity shortage, the blue light will flash continuously after a few seconds, it will automatically shut down and save the video;

(2) when the host is in standby mode, without any operation within 1 minutes, it will automatically shut down to save power.

#### **6.Sides Filling And Recording**

Connect the charger in 10 seconds, each function can

---

be operated.

## **7.Cycle video**

The video for (1/2/3/5/10) minutes to save a document, and lack of full video to TF card case, the machine will automatically delete the front (1/2/3/5/10) minutes of video files, video to work. (the length of time can be configured by software)

## **8.Charging**

The built-in rechargeable lithium battery can be charged by the following way:

- (1) insert the machine into the USB port of the computer;
- (2) connect the machine to the DC 5V charger charge.

When charging, the red light blue light, when the lithium battery is fully charged, the red light blue light.

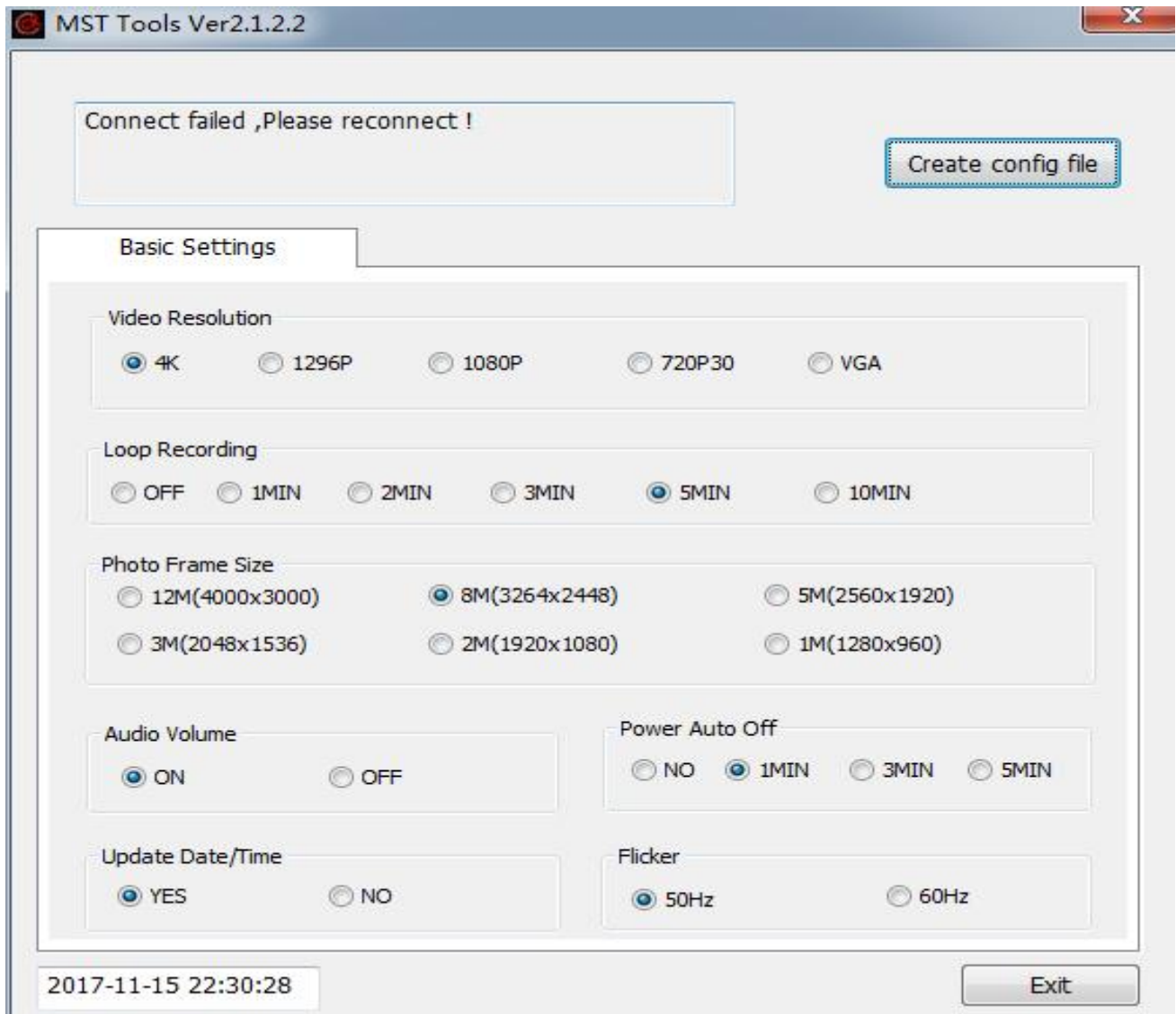
Note: when the battery is insufficient, the blue indicator flashes for several seconds and then automatically shuts off. At this point, please charge the machine.

## **9.Fault Reset**

When the machine is not working properly, you can try to reset the reset, in order to make the machine back to normal. The concrete implementation method is: insert the reset hole from the reset hole with a thin rod, and then click the built-in reset button to realize the reset operation once.

## 10. Setting the CarKeyCam

Click through the edit parameter software MSTconfig.exe to set the interface as follows:



You can set the video specifications / video, each file time / camera specifications / sound switch / time watermark / standby time and other parameters, after the completion of the modification, click the button Create configuration file on the lower left to save the settings.

The generated setup file MSTconfig.bin will be copied into the root directory of the memory card, the machine and the computer will be disconnected, reboot, and the new modified parameters will be effective.

## Specifications

View Angle :	75°
Min. Illumination :	1 Lux
Video Format :	MOV
Compress Format:	H.264 advanced version
Vedio Resolution :	4K3200*1800/2K2304*1296P/1280*720/ /640*480 VGA
Frame Rate :	30fps /60fps
Photo Format :	JPG
Photo Resolution :	4000*3000/3264*2488/2560*1920/2048* 1536/1920*1080/1280*960
Storage:	Micro SD Support 4- 128GB
USB Interface :	USB 2.0
Battery Charge :	DC 5V/500mA
Battery Capacity:	600mAH
Dimension :	Machine:71*40*17mm Packing: 149*122 *46mm
Net Weight :	Machine : 43 g      Packing: 135g

\* Specifications are subject to minor change with upgrade and update. Please base on real object.



---

## Caution:

- (1) when the product is in the video, the body will have a certain degree of fever, which is normal. In order to ensure heat dissipation, please make sure that the product is used in a well ventilated environment, and don't wrap the product in use.
- (2) do not put the product in a humid working environment, the product does not have waterproof function, please avoid the product watering or exposed to rainwater.

## Important:

All jurisdictions have specific laws and regulations relating to the use of cameras and voice recorders. Before using any camera and/or voice recorder for any purpose it is the buyer's responsibility to be aware of all applicable laws and regulations that prohibit or limit the use of cameras and voice recorders, and to comply with the applicable laws and regulations.

