

User Manual



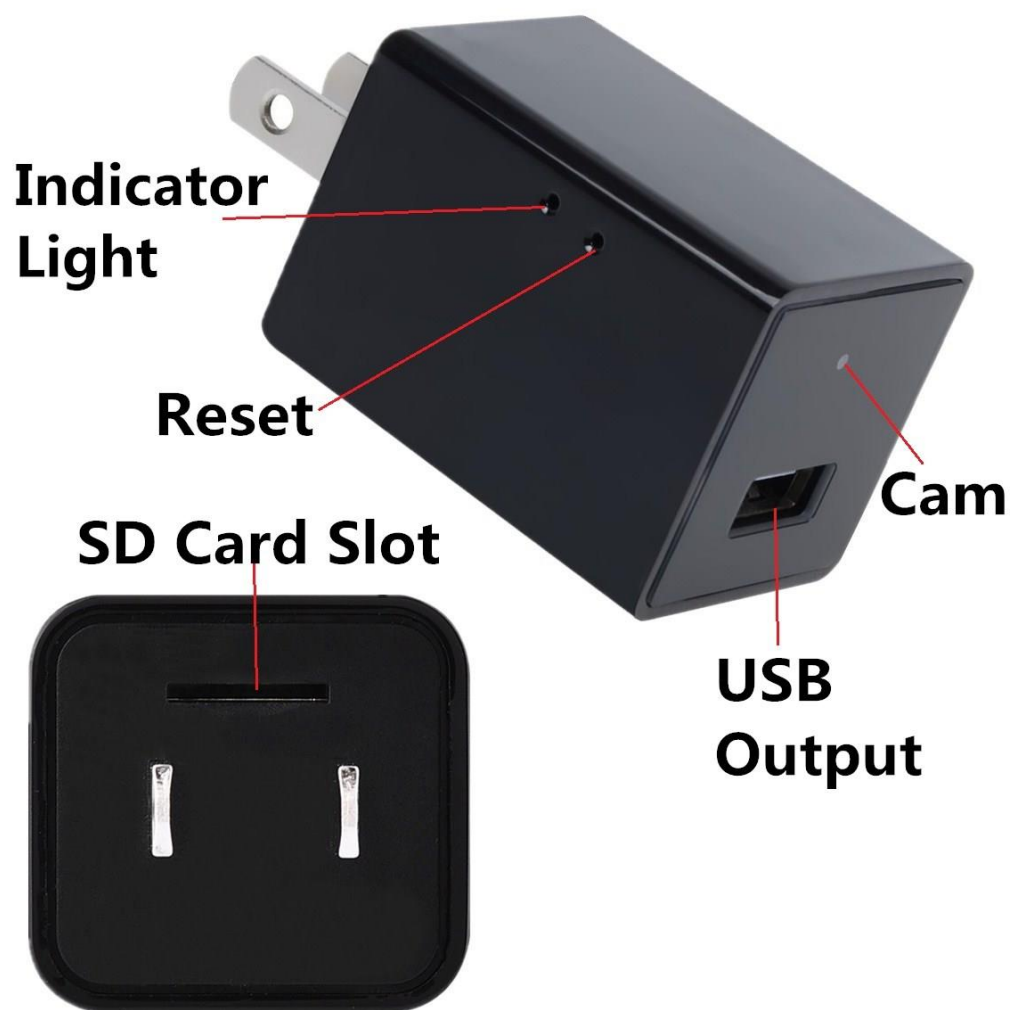
Motion Activated



Remote Wireless Video Recording Charger Spy Cam –

Thank you for purchasing our products. With a unique ultra-portable design, the product can be applied in various fields and make your daily life convenient, safe and colorful. Please properly set your camera according to the following steps.

Product Structure



- (1)Indicator Lights,
- (2)Reset,
- (3)SD Card Slot,
- (4)Camera Len,
- (5)USB/Charge

1. Get Started: Insert a TF card into the slot and Please plug the device into sockets to make it charge. Once electrified, the device indicator lights will flash and automatically charge.

2. Spy Cam Mode: Once electrified, the device will search WIFI and send out signal. **You have to connect the device with your phones or PC.** It may take you several minutes. Once connected, the device will automatically record live videos.

3. APP BVCAM: Make sure your device is connected with Wi-Fi.


- The camera is compatible with Wi-Fi 2.4 GHz only, NOT available for 5.0 GHz. (The camera does not work with the public network needed to be authorized on website.)
- Download App BVCAM from Google Play Store (for Android) or Apple Store (for iOS).
- Please connect your phones or PC with the device first. Then click into the APP and add it to your list so you can control and watch your recording files(including live video).

4. Alarm Settings



Alarm Config



- Tap  to enter Settings>Device Settings
- Motion detection sensitivity: When motion detection is enabled, the device will send you an alarm automatically if motion is detected. You can choose a sensitivity level for Motion detection. It has 7 levels. When you choose “disabled”, motion detection will be closed.
- Alarm schedule: You can set a time period only in which it sends alarm information to you.
- Warning Tone: After enabling motion detection (Motion detection sensitivity is not set to “disabled”), you can enable the camera to send out alarm sound or not. This function applies to certain types. For some types, if smoke/gas detection is available, the alarm also can be triggered. When it sounds an alarm, you can tap the icon to stop it.
- E-mail Alert: After enabling motion detection, you can enable or close the E-mail alarm. Just go to “Email Settings” to set it, then it will send you photos shot at the moment it detects the moving object. For some types, if smoke/gas detection is available, the alarm also can be triggered.
- Alarm interval: After enabling motion detection, if motion is detected, the camera will perform alarm. You can type in an Arabic number between 30 with 300 to set the time interval between two alarms.
- Push notifications: You can enable or disable this functionality. If you enable it, it will send you alarm information even if exit the App in

iOS-powered devices, or run the App in background in Android-powered devices.

- On-Screen Display: If you enable this functionality, it will display current time in the app.

After setting, please tap “OK” to save it.

5. SD Card Record Settings SD Card Record Config >

- Record: If you want to record all day long, please choose “All day”. If you choose “On alarm”, you need to enable motion detection. You can also choose “Timing Record” to set a time only in which it records videos into Micro SD card.
- Resolution rate: You can choose the resolution of video recorded in the Micro SD card (not live video).
- File length (minute): It creates a file every 3 minutes by default (that means it will automatically generate a video file every 3 minutes and continue recording). You can type in a number to set file length between 1 and 60 minutes.
- Record sound: When you enable this functionality, it will record sound while recording video.

Loop recording: When you enable this functionality, it will override the oldest file and continue recording even if the Micro SD card is full. After setting, please tap “OK” to save it.

6. Email Settings



Email Config




Type in E-mail addresses for a sender and as many as 4 recipients. And fill in “User” and “Password” blanks with the sender’s E-mail addresses and corresponding password, respectively. Then tap “OK” to save it.

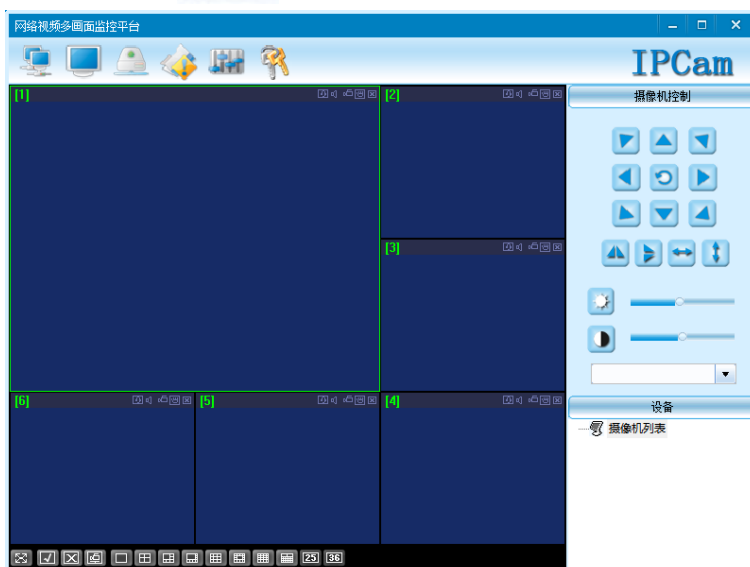
7. Add Camera to PC



NOTE: Camera must be connected to network first.

Run IPCMultiViewSetup in CD’s Windows folder and install on your PC.

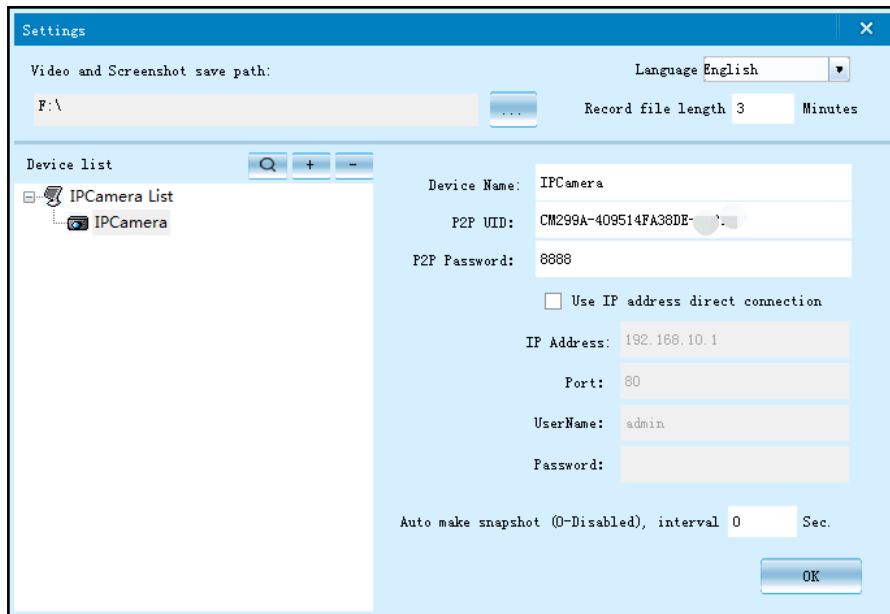
The Username is “admin” with NO password, then log in.

- Click “” to add camera to PC.



- Click “”, input the camera name, camera's UID (Located at the bottom of camera), and password (Default password is 8888), then click "OK".
- Or you can click “” to find your opened lens wifi, then fix its name, UID and password.

***NOTE:** Please remember the UID and its password if you want to watch it remotely.



- If the camera and PC is in LAN, just click to search the camera's UID, then click the camera' s UID and “OK” .
- Click “-” to delete camera from the device list.
- Double click the “camera name” at the bottom right corner to connect the camera.
- After connected, click these icons to use the camera functions. Click “Settings” icon to finish settings:

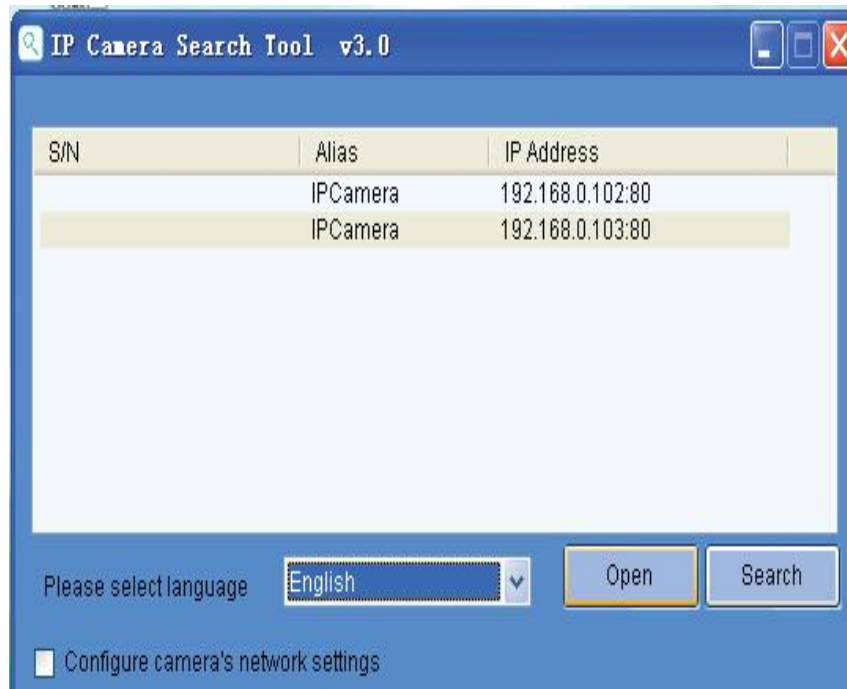


***NOTE:** The detailed instructions are in the CD.

8.View in Web Browser

- Run IP Camera Search Tool in CD’s Windows (MAC OS) folder. Click Search and double click the camera item listed in the camera list.
- The Username is “admin” and no password is required.

- You can visit camera only in the local area network (LAN) on Mac.
- Make sure the Mac and camera are connected with the same Wi-Fi.
- Click “IP Camera Search Tool” icon.



- Click “IP address” and then click “Open”.



- Click “Browser plug-ins”

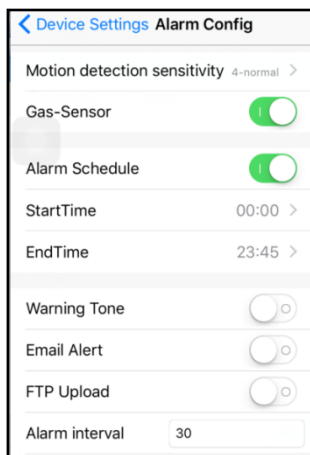
Please install the player plug-in, Click to download [\[Player\]](#)

If your PC does not install the player plug-in, please click to download and install.


After install the player plug-in, you can view the camera real-time video in Mac by Website.

You can also click the settings icon to finish settings.


VIII.Device Settings Instructions



You MUST click “OK” if you want to save the changes of the settings.

- Alarm Config  Alarm Config >
- The sensitivity of the motion detection alarm which contains 7 levels. Set "Motion detection sensitivity", turn on "Alarm Schedule", set "Alarm interval", then

click “OK”.

- Note: The detailed instructions are in the CD.
- On Screen Display: The time will be shown on the live video screen.
- WiFi Config  WiFi Config >
- You can connect the camera to other network if there are two or more networks around the camera. Select a network name and input the network password, then click “OK”.

- SD Card Record Config  SD Card Record Config >


- The camera supports up to 32GB micro SD Card.
- Please power off the camera when insert or remove the micro SD card.
- If a micro SD card is not recognized or cannot format when inserted into slot, please remove and insert again.

➤ **Must format micro SD card:**

For brand new micro SD card, please format before use.

The micro SD card capacity is not detected.

- The micro SD card can NOT be formatted when it is recording, please select “Close”, then click “OK”.

Record sound 

You can choose to record sound or not when video is recording.

Loop recording 

Turn ON: The micro SD card will be overwritten after its space is full.

- Time Settings
- Time Zone: select your Time Zone, click “OK” to save changes. Click “Sync with App Time”, then the camera time will be in sync with your device time.
- Change Password
- The default password is 8888, the new password can be set up to 15 characters, which you can use letter and number as password.

9. Q&A

➤ Q: How Can I Reset My Camera?

➤ A: 1.The reset button is located beside the indicator lights.

2. Please use the needle(which is always used to take out SIM card from your phone) and insert it into the reset button. Once the reset button has been activated, the device will be reset and you can use the device again.

3. After reset, the camera will recover its factory settings. You have to reset it if you fail to connect, video or forget your password, especially when the device abnormally works or suddenly doesn't work.

➤ Q: What is Micro SD Card Required for Recording? Why I Can't Use My Micro SD Card for Recording?

➤ A: The camera supports up to 32 GB Micro SD card. You must format the Micro SD card following the Format instruction. If a SD card is not recognized when inserted into camera, please remove and insert again.

➤ Q: Do I have to constantly have my phone connected to the camera for the alarms to work? Or do I set it up once and disconnect?

➤ A: You don't need to connect the phone to the camera all the time. Make sure your phone's internet connection and just let APP BVCAM run in the background, you can still receive alarms and watch live video and recording files whenever you want by entering APP..

- Q: Why does my computer or security software say the software is dangerous and it is a virus?
- A: The software will detect device in your network, and it seems like a virus. Please ignore the warning and continue.

- Q: Why the camera can't go online?
- A: 1. Check if your Wi-Fi setting is correct or not, proper password may be needed.
2. Check if your router is working properly or not.
3. Check your signal, your device may don't connect to Wi-Fi due to weak Wi-Fi signal.

- Q: How can I record videos when not connecting the device to a wireless network?
- A: You can record videos in the Micro SD card.

10. Product Parameter:

Video Format: AVI/ASF

Photo Resolution: 720P

Photo Pixel: 130 mega pixel

Support System: iOS,Android,Windows PC

Hotspot Range: 30m

Device Connection Range: 5m

Wifi Receiving Range: 15-30m

Charging Voltage/Current: DC 5V/1-2A

Last after Fully Charged: Once electrified

8GB for 1080P: 5MB/min

Available Capacity: 32G(TF Card NOT included)

Battery Type: Li-ion Metal Battery

Battery Method: USB

Support Wifi Mode: 802.11bgn 2.4GHz

XI.Package content:

1*Manual

1*Wireless Video Recording Charger

1*Micro Memory Card Reader

1*Needle