

Photo Frame Camera

Large Capacity Camera Series

Model: T10



User Manual

- Please ensure that you read the entire Photo Frame Camera User Manual carefully before using any part of the product.
- Keep this User Manual for future reference in case of operational difficulties.

General overview

Main features:

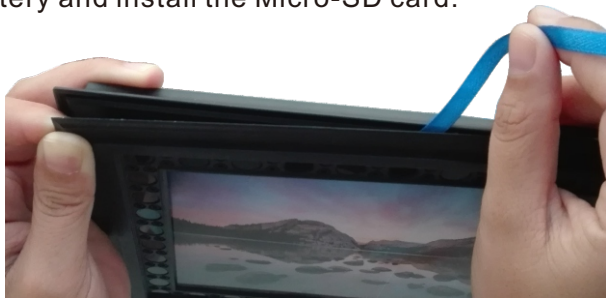
- This Photo Frame Camera is the world's first 2-year large capacity battery motion unit.
- You can easily change the picture in the frame at size of 13*18CM or 5.12 x 7.09 in.
- The Photo Frame Camera is super slim - only 14mm (0.55in) thick.
- Hidden PIR, Lens, LED, USB switcher and buttons make the Photo Frame Camera look like any typical photo frame.
- Conbrov's Starlight Technology uses invisible LEDs to detect and record motion up to 5-8 meters or up to 15-25 ft in total darkness.
- Privacy protection lets you choose to record video with or without audio by easily switching the audio button ON or OFF.
- The Photo Frame Camera can be hung on a wall using the screws provided or it can sit on a shelf for placement where you prefer.

Important Reminders:

- Please read the entire User Manual before using the Photo Frame Camera.
- Please test the position/angle of the Photo Frame Camera by recording and playing back a video in advance of selecting a final location to make sure the camera captures the area you want.
- Please DO NOT use this camera for illegal purpose. It is important to follow the laws in your region.
- Conbrov is not responsible for missing any video recording due to incorrect operation, Micro-SD malfunctions or you're exceeding the Camera's viewing limitations.

Quick Start to use the camera

1. Use the blue ribbon to carefully remove the Photo Frame Camera's front cover to change the photo, charge the battery and install the Micro-SD card.



2. With the photo removed, press MD button directly and it will enter PIR motion activated mode.

Indicator: Blue light and red LED lights turn on and then the blue light goes off. The red LED flashes 3 times and goes off. The red LED light will then stay on.



Quick Start to Use the Camera

3. Or hold down the Power button to power On the camera and then press the REC button to start recording manually and continuously.

Indicator: Blue LED stays on when you power On the camera.

Indicator: Blue LED flashes and then goes Off when the camera is in recording.

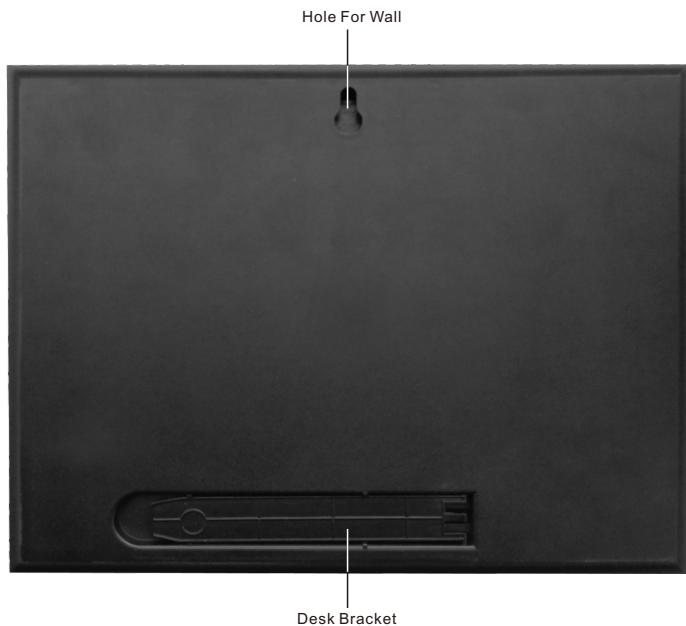
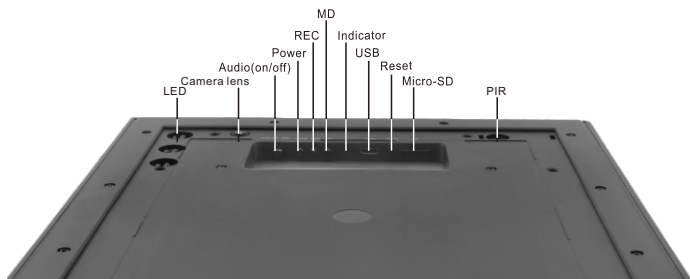


4. You can select audio ON or OFF when you start to record your video.

Note:

- While using the Camera, it should be placed in a horizontal position to shoot objects or people in front of the Camera.
- With the Camera in PIR motion detection mode, each time you press the button, there will be about 1.8 seconds delay to start video recording.
- Avoid using the Camera in extreme temperatures. Doing so will reduce motion detection accuracy.

Camera Structure and Button Function



How to Install and Remove the Micro-SD card

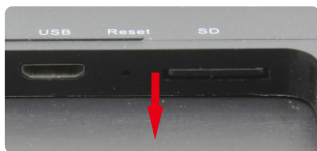
Installing the Micro-SD card: Please insert the Micro-SD card correctly into the Camera card slot. The Micro-SD card must be in the slot to record video and audio.

Removing the Micro-SD card: Please use your fingernail to push the card slightly into the slot until it “sets”. When you want to remove the Micro-SD card, use your fingernail again to lightly push in on the card and then the card will pop out automatically.

DO NOT remove the Micro-SD when the camera is either powered On or when it is connected to a computer. This can cause damage to the Micro-SD or the entire camera.



Inserting Micro-SD card



Taking Micro-SD out

Special Notes:

- The Camera can record video **ONLY** when the Micro-SD is installed.
- **DO NOT** remove the Micro-SD when the camera is either powered On or when connected to a computer. This can cause damage to Micro-SD or the entire camera.
- Please ensure that minimal effort is applied to the Micro-SD when installing or removing it from the Camera. Use of force can easily damage the Micro-SD or the product parts.
- Before using the product for the first time, ensure that the Micro-SD is formatted. Please check for any saved data in the Micro-SD to avoid unexpected loss.

We are not liable or responsible for malfunctions that result from failure to follow the guidelines above.

Charging Information

1. Charging using the adapter



- It is recommended you charge the Photo Frame Camera using a 2A USB power adaptor (not supplied) with the USB cable provided in the package.
- When the battery capacity is low, the Camera cannot be powered on, or the red and blue LED indicator will flash for 10 seconds and then Camera powers off.
- During charging, the yellow LED indicator will stay On. Once it is fully charged, the yellow indicator will go Off.

2. Charging the Camera with a PC.



It is recommended you turn Off the Camera during charging. During charging, the yellow LED indicator will stay on. Once it is fully charged, the yellow LED indicator will go Off.

Charging Information

3. Connect with your PC as a U-disk

Please turn on the Camera first, then connect the Camera to your computer via the USB cable.



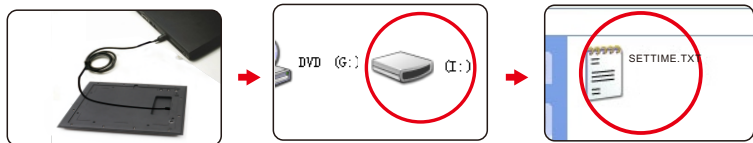
The yellow and blue LED indicators will stay on, the red LED indicator will flash.

Detection Angle Capabilities

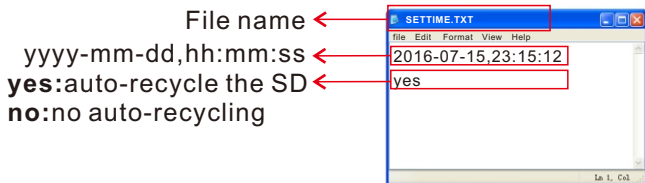


Time and Date Setting

Step 1: Power the Camera On and connect it to a computer via the provided USB cable. Please wait for a few seconds and you will see a removable disk open on your computer. Then open the SETTIME.TXT file.



Step 2: Please change the numbers/letters as needed.



Step 3: Disconnect the Camera from the computer and power the Camera On it to start recording. The time settings are done and you will find time&date watermark in the video recordings.

SPECIAL NOTES:

- Please remember to SAVE the file you recorded before exiting or the change will not be saved.
- Please do not add any blank space or characters to change the existing file format.

Operation guide

Important Notes:

1. If you didn't find the SETTIME.TXT. file when you open the Micro-SD card from your computer, please record a video clip using the Camera to activate the card and then try to set the date and time again.
2. The amended date and time will not change unless the battery loses its charge for a long time.
3. Should your Camera malfunction, using a toothpick or the reset pin provided with the Camera to hold down the reset button to reset the Camera.



4. Should the Camera power Off automatically, there are two reasons:
 - A: The power is too low and you need to recharge the camera.
 - B: There is no Micro-SD memory card installed or the memory card is full when the Camera set to no loop recording.

Indicator Status and Meanings

<p>Power On (Push and hold the power button for 2 seconds)</p>	<p>Normally the blue LED indicator will stay on.</p> <p>If no Micro-SD, the blue LED will flash for 10 seconds and then it powers off.</p> <p>The Camera powers Off after 60 seconds if there is no any operation.</p>
<p>Record continuously (Press REC after powered On)</p>	<p>Press REC, the blue LED indicator will automatically record for 10 minutes per record file. Or press REC again, the blue LED will be on to save the present video and stop recording.</p>
<p>MD (Press MD after powered on)</p>	<p>Red LED indicator always on.</p> <p>When there are people moving, the blue LED indicator will turn On and then goes Off. The red light flashes and goes Off (the first red light will stay On) Now the Camera will record the present motion and save a video to the Micro-SD card.</p> <p>Press MD again, the blue and red LEDs will flash and go off. The Camera will save present video, quit MD and power off.</p>
<p>Charging using 2A USB adaptor</p>	<p>The yellow LED will stay On during charging; once full charged, it will go Off.</p>
<p>Power Off (By pressing the power button)</p>	<p>The red and blue LED will be On for 2 seconds and the Camera powers Off.</p>

Detailed parameters

Item	Parameter
size	24.5*19.5*1.4CM
Product net weight	410g
Battery	LiPo
Stand-by power consumption	10uA
PIR detection angle	60 degrees
PIR detection distance	5-8 meters
Camera angle	about 75 degrees
Max PIR stand-by time	2 years
Day time recording power consumption	220mA
Max day time recording time	about 30 hours
Night vision recording power consumption	650mA
Max night vision continuously recording time	13-14 hours
Full-Charging time	about 20 hours by 2A USB power adaptor
Resolution	720P
FPS	30FPS
PIR MD video record	about 1-2 minute per file
Record continuously	about 10 minutes per file
Max SD storage	32GB
Loop recording	optional

Product accessories



Camera



USB cable



Manual



Warning sticker



Card reader



Screws

Questions & Answers

1-Why does the Camera not have night vision?

The Camera's sensor detects the current environment. If you turn on the Camera and the light is higher than 20lux, then the sensor will test the current ambient light. The video will turn to color.

Otherwise, the video will turn to black and white.

If the light is higher than 20lux during recording, and you enter into a room that the light around is lower than 20lux, the night vision is not working.

2-How long does the Camera record to a 32GB Micro-SD card?

In general, it takes about 4.5 hours to fill the 32GB card.

3-Does the Camera support recording during charging?

Yes, the Camera supports recording during charging.

4-Why is my Camera not being recognized on the computer?

Please turn on the Camera first, then connect the Camera to the computer via USB cable. (The blue LED indicator will stay on and the red indicator will flash.)

5-Why can't I playback the video on the computer?

If you use a Mac, please try a VLC player.

If you use a Windows computer, please try KMPlayer.

Sometimes, it is the problem of the media player.

6-Why does my video have no audio?

Please check that the audio button is turned On when you are recording.

If yes and you still have no audio, please change the media player and try it. (See question number 5.)

Trouble shooting:

If the Camera is frozen, please reset the Camera by poking the small reset hole for a couple seconds until the Camera turns Off.